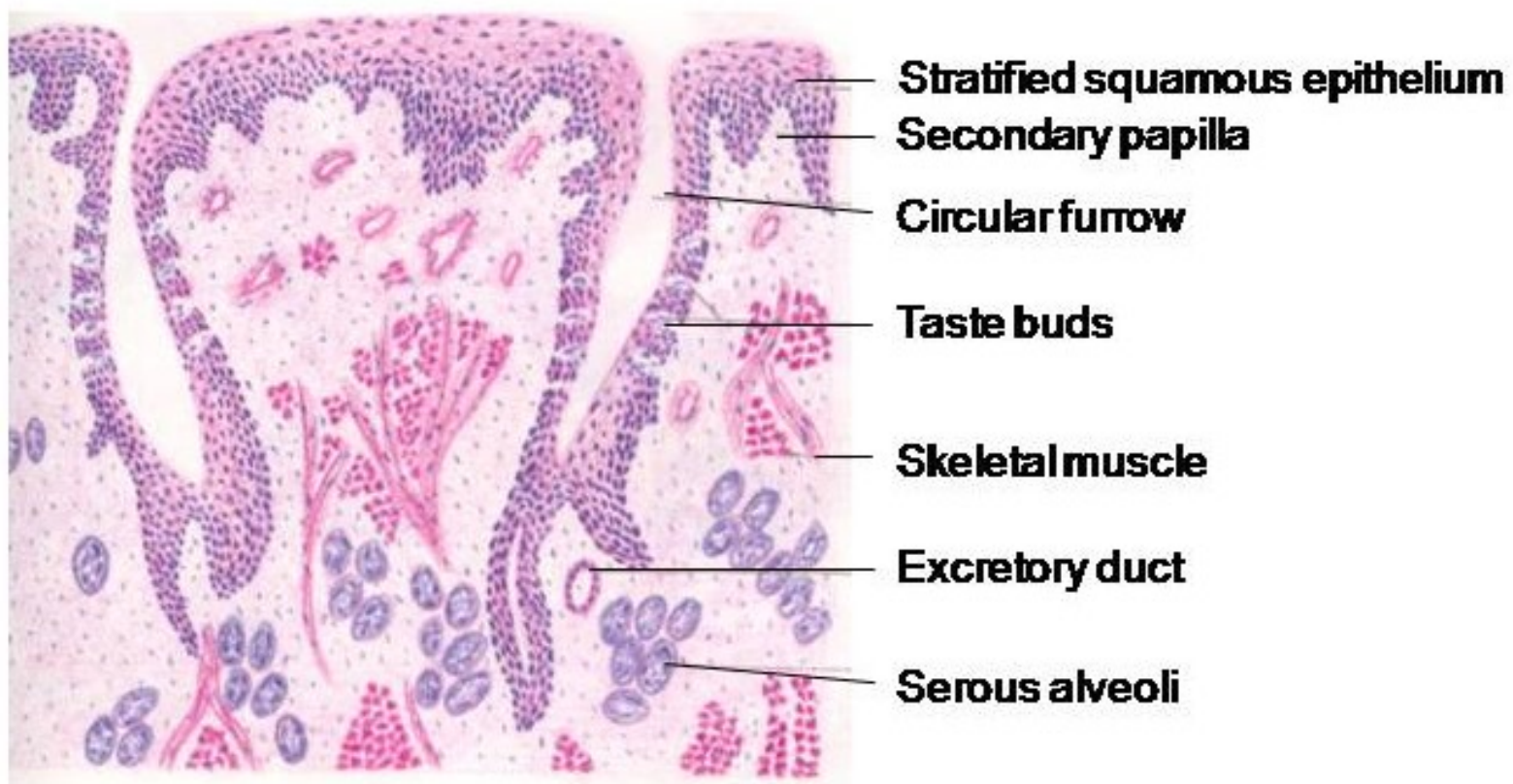


# Histology Specific Points For Spotters



Leelavathy N

# Table Of Contents

- 01** Hyaline Cartilage
- 01** Elastic Cartilage
- 02** White Fibro Cartilage
- 02** Bone Transverse Section (TS)
- 03** Bone Longitudinal Section (LS)
- 03** Skeletal muscle Transverse Section (TS)
- 04** Skeletal muscle Longitudinal Section (LS...)
- 04** Cardiac muscle
- 05** Smooth muscle
- 05** Peripheral nerve TS
- 06** Sympathetic / Autonomic Ganglion
- 06** Spinal/ Dorsal root Ganglion
- 07** Large Sized Artery/ Elastic Artery

# Table Of Contents

- 07** Medium Sized Artery/ Distributing Artery
- 08** Medium Sized Vein
- 08** Large Sized Vein
- 09** Lymph Node
- 09** Thymus
- 10** Spleen
- 10** Tonsil
- 11** Thick Skin
- 11** Thin Skin
- 12** Serous Salivary Gland
- 12** Mucous Salivary Gland
- 13** Mixed Salivary Gland
- 13** Placenta

# Table Of Contents

<b>14</b>	<b>Umbilical Cord</b>
<b>15</b>	<b>Trachea</b>
<b>15</b>	<b>Lung</b>
<b>16</b>	<b>Tongue</b>
<b>17</b>	<b>Esophagus</b>
<b>17</b>	<b>Stomach Fundus</b>
<b>18</b>	<b>Stomach Pylorus</b>
<b>18</b>	<b>Duodenum</b>
<b>19</b>	<b>Jejunum</b>
<b>19</b>	<b>Ileum</b>
<b>20</b>	<b>Large Intestine</b>
<b>20</b>	<b>Appendix</b>
<b>21</b>	<b>Liver</b>

# Table Of Contents

<b>21</b>	<b>Gallbladder</b>
<b>22</b>	<b>Pancreas</b>
<b>23</b>	<b>Kidney</b>
<b>24</b>	<b>Ureter</b>
<b>24</b>	<b>Urinarybladder</b>
<b>25</b>	<b>Pituitary Gland</b>
<b>25</b>	<b>Thyroid Gland</b>
<b>26</b>	<b>Adrenal/ Suprarenal Gland</b>
<b>26</b>	<b>Testes</b>
<b>27</b>	<b>Epididymis</b>
<b>27</b>	<b>Vas Deferens / Ductus Deferens</b>
<b>28</b>	<b>Prostate</b>
<b>28</b>	<b>Uterus</b>

# Table Of Contents

29	Uterine tube
29	Ovary
30	Cornea
30	Retina
31	Optic nerve
31	Cerebrum
32	Cerebellum

## Hyaline Cartilage

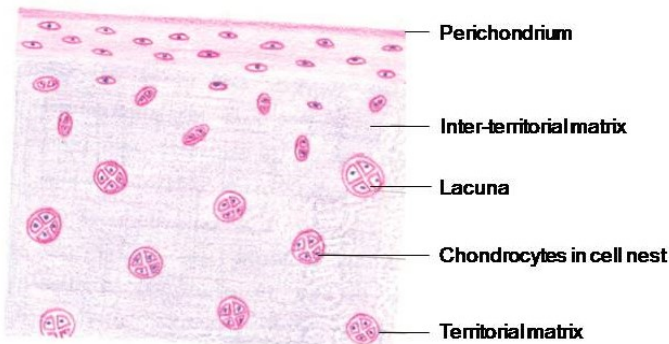
Covered by outer fibrous and inner chondrogenic perichondrium

Homogenous, glossy, transparent, basophilic matrix due to same refractive index for collagen type II fibers and ground substance

Territorial matrix surrounding cell nest and interterritorial matrix between cell nests

Chondrocytes arranged in the form of cell nest prevalent in the center

Cell nest/ isogenous group are 2 to 4 cells present in groups surrounded by territorial matrix



## Elastic Cartilage

Covered by outer fibrous and inner chondrogenic perichondrium

Matrix with more elastic fibers along with collagen type II fibers embedded in ground substance

Larger chondrocytes in lacunae more prevalent in the center

